

HSF RoHS

SPECIFICATIONS

Rated Current:1.0AMP
 Contact Resistance:35mΩ Max
 Withstand Voltage:500V AC/DC
 Insulation Resistance:500MΩ Min
 Operation Temperature:-40°C to +105°C

1. MATERIAL:

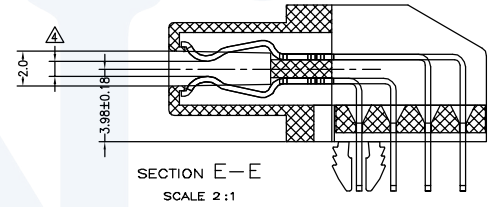
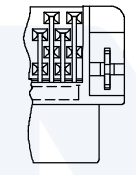
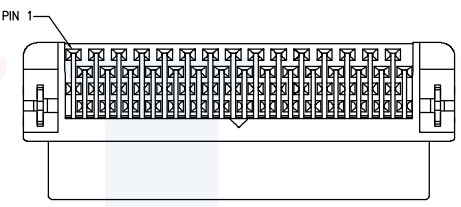
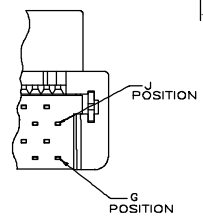
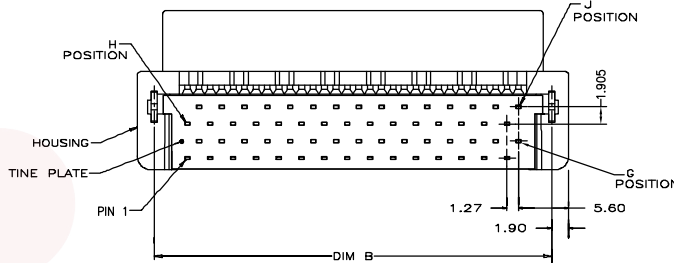
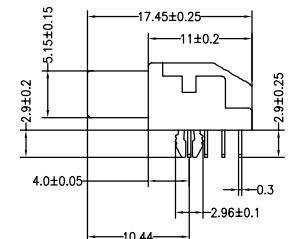
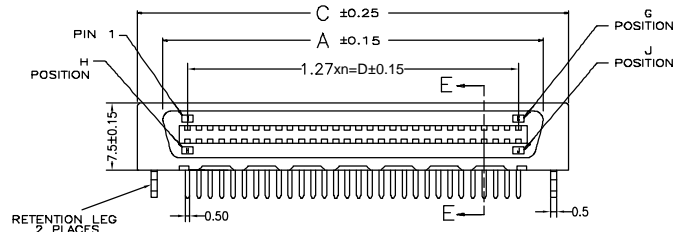
Contact Material:Phosphor bronze
 Boardlocks:Brass. (Phosphor bronze)
 Insulator Material:LCP Polyester(UL94V-0)
 Max.Processing Temp: 230°C for 30-60 seconds
 (260°C for 10 seconds)

2. FINISH:

CONTACTS: (SEE TABLE) GOLD PLATED ON CONTACT AREA,
 3.81μm MIN. MATTE-TIN ON SOLDER TAIL, OVER
 1.27mm MIN. NICKEL UNDERPLATED.
 BOARDLOCKS: 3.81μm MIN. TIN-Cu OVER
 1.27mm MIN. UNDERPLATED.

3. G, J, AND H INDICATES NUMBER OF POSITION MARKED ON ASSEMBLY.
 ALSO SEE TABLE.

4. CONNECTOR SOLDER TAILS WILL ACCOMMODATE PRINTED CIRCUIT BOARD
 THICKNESS OF 0.80 TO 1.60



74.93	86.13	82.33	80.47	60	120	61	120
62.23	73.43	69.63	67.77	50	100	51	100
49.53	60.73	56.93	55.07	40	80	41	80
41.91	53.11	49.31	47.45	34	68	35	68
38.83	48.03	44.23	42.37	30	60	31	60
30.48	41.68	37.88	36.02	25	50	26	50
24.13	35.33	31.53	29.67	20	40	21	40
17.78	28.98	25.18	23.32	15	30	16	30
11.43	22.63	18.83	16.97	10	20	11	20
D	C	B	A	G	J	H	POS.

FOR 20,40,60,80,100,120 POSITIONS ONLY

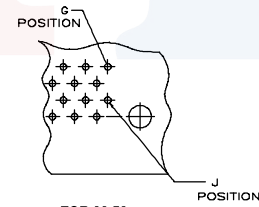
FOR 30,50 POSITIONS ONLY

SECTION E-E
SCALE 2:1

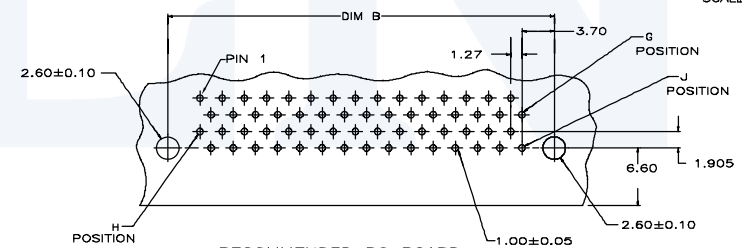
Ordering Information

6314-F XXX R D XX P W A 01

No. of Pins: 20,30,40,50, 60,68,80,100,120P
 Connector Type: R:Right Angle
 Contact Plating: G0:Gold Flash, S0:Gold Flash/Tin, S1:30U" Gold /Tin, S2:50U" Gold /Tin, S3:100U" Gold /Tin, S4:150U" Gold /Tin, S5:300U" Gold /Tin
 Packing: A:Tray



FOR 30,50 POSITIONS ONLY



FOR 20,40,60,80,100,120 POSITIONS ONLY

OPERATION	DRAW	Yiyusheng	19.11.09
X.X ±0.30	CHECK		
X.XX ±0.20			
X.XXX ±0.10	APPROVE		
Angle ±3°			
DIM TOL			

SCALE	FIT
UNIT	mm
SIZE	A4
SHEET	1/1
PROJ.	

JILN® 深圳市锦凌电子有限公司
 SHENZHEN JINLING ELECTRONICS CO.,LTD
 Tel: 86-755-2997-5806 Fax: 86-755-2997-5992

A0	2019.11.09	NEW DRAWING	
REV	DATE	MODIFICATION DESCRIPTION	CHANGE

PART NO.	6314FXXXRDXXPWA01
TITLE:	M-type SCSI Female NPin All-Plastic 90°